



ABECCA

BY DESIGN

HAWK RANGE CATALOGUE

CONTENTS

SAFE FURNITURE	4
MISSION STATEMENT	5
ABECCA VALUES	6
ABECCA FOUNDERS	7
OUR STORY	8
OUR RANGE	11
HAWK RANGE	12
KEY BENEFITS	13
KEY PURCHASING CONSIDERATIONS	17
TECHNICAL SPECIFICATIONS	18
HAWK RANGE PRODUCTS	20
ANTI-LIGATURE FOAM DOOR	69
MATTRESSES	72
CUSTOMER SATISFACTION	84



ARE YOU SURE YOUR FURNITURE IS SAFE?

This is the most important question when considering furniture for special care and corrections services. Abecca have heard the same story too many times, where so called fit-for-purpose furniture has been used to destroy facilities and propose serious danger to service users and staff. Weighted furniture is not weighted enough, bolted down is a dangerous anchor point, sewn only seams come apart, the list goes on!

If you really care about creating a safe environment, reach out to the world's safest furniture manufacturers before it's too late.



OUR MISSION STATEMENT

"Creating Safe and Harmonious
environments through extraordinary
innovation."





ABECCA VALUES

A strong, reliable organization built up on:

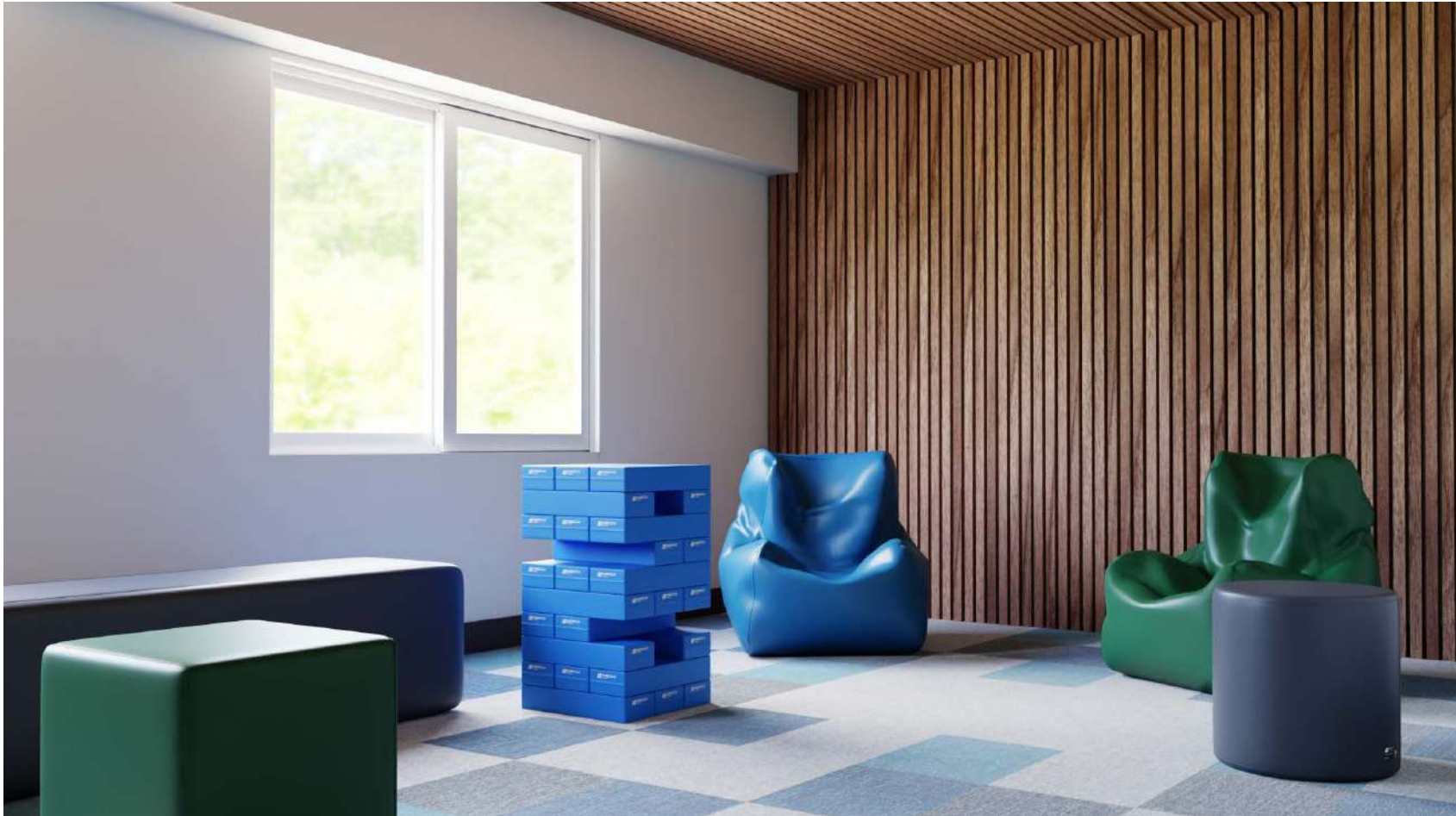
INNOVATION – We challenge the status quo everytime

INTEGRITY – We stand by our word and every commitment is without compromise

PASSION – We believe in our products and will not sacrifice on quality

LOYALTY – We trust and support each other in achieving our goals

CARE – We genuinely care for our customers, suppliers and staff alike.



"THE SERVICE WE HAVE RECEIVED FROM ABECCA HAS BEEN ABSOLUTELY OUTSTANDING. THIS HAS SET THEM APART FROM EVERYONE ELSE WE HAVE TO DEAL WITH"

MATTIAS

OUR STORY

Abecca's experience with textiles first started in 1952, when Mr David Beatson, returned from World War II and started a new life supplying and repairing cow covers using canvas fabric.

Fast forward 70+ years and the same Beatson family now proudly hold the title of the world's safest furniture manufacturers. With the 4th generation actively involved we are family owned through and through.

Designers, Innovators and Manufacturers of the World's Safest Furniture best describes Abecca in a few words. Our client first philosophy and manufacturing capability means the finest detail on every safe furniture solution is because of feedback from clients like you. Being the manufacturer gives us and you such an advantage where even a minor change to a product is absolutely no issue to Abecca.



David Beatson, Abecca founders grand and great grand father started working with textile fabrics.

● 1952

1952
- 2012

Abecca was operating under a parent company (Betacraft Ltd)

Abecca Healthcare registered as a standalone entity

● 2013

2015

Abecca's first Sensory furniture item produced (the sensory rocking chair)

Strong growth in the mental health furniture space resulted in Abecca rebranding and trading as Abecca by Design

● 2018

2019

Abecca's Eagle Range was born

Abecca working closely with youth justice space to produce 100% fit for purpose furniture.

● 2020

2023

● 2024

Abecca's Hawk range officially launched

Hawk and Eagle range completely refreshed with new designs and greatly improved durability.

HAS IT EVER OCCURRED TO YOU HOW DANGEROUS FURNITURE CAN BE?

Every facility needs furniture, right? And the ideal piece of furniture is comfortable, durable, aesthetically pleasing, rehabilitative and movable. But putting all these attributes together in a correctional or forensic environment imposes risk.



That is exactly why Abecca exists. It all started with requests from numerous special care and corrections institutions, who were struggling with their furniture. One customer reported hundreds of thousands of dollars' worth of damage, where the furniture was used as missiles to destroy the room.

Others had service users breaking windows using weighted furniture and escaping on an almost daily basis. We've had countless stories shared of injured staff and months off work.

Not to mention the untold stories of permanent injury or even fatal consequences due to misuse of furniture (even fit for purpose weighted furniture).

Our promise to you is Abecca's safe furniture overcomes all these constraints plus lots more. Why not use specialist furniture to help create a therapeutic homely feel while completely removing the risk of serious damage or injury due to furniture misuse?

ABOUT OUR RANGE

With Abecca's Hawk safe furniture occupying the entire youth justice space in New Zealand (because it's the only furniture that works) we know and completely understand the principles and structure required for safe furniture. Not only that, we also know what doesn't work. We have complete confidence in our Hawk safe furniture range as we know it works in the youth justice space.



Holding the title of the "World's Safest Furniture" does not come easy and means we simply cannot use wood, metal or any hardened materials in the structure of our furniture. In the unlikely event of a service user getting into a piece of our furniture, we can say with complete confidence, there is still nothing inside that can be used as a weapon.

In the event of a tantrum, the choice is yours. Would you prefer damaged furniture and unscathed people and facilities? Or, furniture in tack, but facilities destroyed, injured staff or even fatal consequences?

Over the years Abecca have refined and mastered the fabrication of foam only structured furniture, using multi-density foams and specialist construction methods to produce furniture very durable, and best of all the safest in the world!

Key Markets serviced

Youth justice, corrections, forensic mental health and high-risk mental health.

SO WHY CALL IT THE HAWK RANGE?



Hawk is a strong, tenacious, bird, yet very powerful. With amazing movability. Their position on the food chain keeps them out of reach for most predators.

We felt these attributes perfectly described our safe furniture range. Soft, tenacious, and durable, providing no risk to service users or staff within any correctional or special care environment.

The Hawk bird won't cause harm to humans, unlike weighted and larger animals. Just like our furniture range; soft and won't cause harm, whereas weighted furniture will.

KEY BENEFITS OF THE RANGE

- Extremely durable, while completely safe, the world's safest furniture.
- No hard or hardened structure, any traditional wooden metal or hardened components are replaced with commercial medical grade multi density foam.
- Soft structure with no need to add extra weight. If it is thrown or tampered with it won't cause harm.
- Fire retardant complying with FR standards (BS 5852: 2006) & (BS7177)
- Anti-rip, tear/slash resistance, PVC upholstery, which won't produce running rips if punctured.
- High Frequency welded seams reinforced with top stitching for extra durability.
- Zero depth seams and one-piece cover design, with no cushions or areas to hide contraband.
- All furniture has a safe working load of 200kgs
- Fully sealed with no zips, medical grade, and infection control compliant.



ABECCA FURNITURE SYMBOLS



Safe

Safe – The safest furniture you can buy. There are no hard components in the structure of Abecca's safe furniture and items haven't been weighted to deter mishandling.



Waterproof

Waterproof – Waterproof PVC with welded seams, the ultimate in infection control.



Fire Retardant

Fire Retardant – All foam and PVC's comply with FR standard BS 5852 : 2006. Fire tests available upon request.



Anti-bacterial

Anti-Bacterial – All upholstery and foams are sanitised to inhibit growth of bacteria, mould and mildew.



Washable

Washable – All furniture is created as a one-piece cover with minimal seams. There are no gaps between arms or headrests for bacteria to build up or a place to hide contraband. All seams are welded, by far the easiest furniture to clean.



Soft

Soft – 100% high resilient foam only structure. Our perfect blend of multi-density foam offers unparalleled, comfort and softness paired with utmost durability and safety.



7 Year Warranty – Even though we know some of the testing environments our furniture goes into, we are so confident in our product we offer a 7 year structural guarantee and a 3 year upholstery warranty.



Locally Made – Skip the queue; Yes, Abecca manufacture our own furniture, not only are we fully in control of the quality but we can supply fast. Plus we offer the best after sales support because our factory isn't far from you.



Free Returns and Repairs – While there isn't normally a need for this point, accidents do happen. If it's a product fault Abecca will repair or replace it no questions asked. If it's a misuse we will certainly look after you, and get the furniture as good as new at very little cost.

KEY CONSIDERATIONS WHEN COMPARING SAFE FURNITURE FOR MEDIUM TO HIGH RISK ENVIRONMENTS



ABECCA HAWK RANGE

SELF HARM

Won't cause damage to buildings, furniture or harm people when thrown. Soft with no hard objects or structure. No way for anyone to be hurt.

CLEANABILITY & INFECTION CONTROL

Easy to move around for cleaning. Covered in a medical grade, anti-bacterial PVC resulting in a seamless easily wipeable surface.

MOVE-ABILITY

Slides around easily on any surface. Great for dining chairs, and won't cause damage to floor due to the structure.

ANCHOR POINT OR BARRICADE

Can't be used to pin staff or patients against, as it will slide out of the way. All structures are foam, so no danger points

COMFORT & FLEXIBILITY

Foam structured with multi-density foam for stability and ultimate comfort. All products have some give; the ultimate for agitated patients.

OTHER WEIGHTED OPTIONS

SELF HARM

In theory can't be picked up, in practice it often is increasing the risk of injury or damage. Often very heavy and very hard, meaning multiple areas for self-harm and harm to other users/staff

CLEANABILITY & INFECTION CONTROL

Heavy and difficult to move, not 100% waterproof due to sewn seam structure, weakening the upholstery and making it water permeable. There are often gaps between seat, back and arms increasing bacteria build up risk.

MOVE-ABILITY

Hard to move and if dragged will damage floor coverings because of the weight - near impossible for dining chairs.

ANCHOR POINT OR BARRICADE

Will work as an anchor point, when bolted down even worse. Both with hardened structures. Can barricade door or entrance way to restrict or stop access.

COMFORT & FLEXIBILITY

Weighted, which is often plastic moulded which is very hard, uncomfortable, and unforgiving. No give or flexibility whatsoever.

TECHNICAL SPECIFICATIONS

PVC SPECIFICATIONS

COMPOSITION

100% PES / 1000 dtex

BREAKING STRENGTH

Warp: 4000N
Weft: 3500N

TEAR STRENGTH

600N

FIRE RETARDANT

M2: NF P 92-507:2004

LIGHT FASTNESS

7-8: 120 105 B02: 2014

ANTIBACTERIAL

SANITISED TO INHIBIT
GROWTH

PVC SAMPLE



FOAM SPECIFICATIONS

DENSITY

36KG/M3

HARDNESS

200N

TEAR RESISTANCE

160N Minimum

TENSILE

90 kPa

ELONGATION

110%

RESILIENCE

50%

TESTING STANDARDS

All furniture complies with FR standard BS 5852: 2006 assessment of ignitability of upholstered seating by smouldering and flaming ignition sources. All mattresses comply with FR standard BS 7177 Crib 7. All PU foams have been tested to AS 2282.12 – 1999 Determination of compression fatigue – static fatigue (constant deflection) – (No structure breakdown observed)



CARE & CLEANING

General Cleaning:

Abecca recommends weekly cleaning of furniture using warm soapy water. Please ensure you dry the PVC using a clean dry cloth. It's paramount that weekly cleaning of our furniture is carried out using warm soapy water.

Spot Clean:

For spot cleaning, Abecca recommends a 50:50 solution of methylated spirits and water. Follow with a solution of warm soapy water to remove any residue. Most stains will lift off easily. To remove difficult stains, wipe affected area with an alcohol-based solution, e.g. isopropyl alcohol. Followed by a warm water rinse.

Still unsure? Please contact Abecca with the cleaner you currently use along with a MSDS sheet if available and we will confirm if it will be suitable to use on our fabric

VISIT: abeccadesign.com

EMAIL: info@abeccadesign.com



SINGLE CHAIR



ORDER CODE: HF1

SIZE: D 780 x W 600 x H 850mm

WEIGHT: 13kg

COLOUR OPTIONS: Three

- Flexible back to assist with agitation, reduces restrictive feeling of a standard chair.
- Designed not to tip when swinging.
- Generous sizing to assist with stability and larger clients.
- No legs or hardened back that could be broken or dangerous.
- Can be used stand alone or as modular seating.
- Can be used in conjunction with the foam dining table.
- Soft and safe to use in any environment and easy to move for dining room tables or cleaning purposes.
- High frequency welded seams reinforced with top stitching for extra durability.

COLOUR RANGE



TEAL

GREEN

GREY



Safe

Waterproof

Fire Retardant

Anti-Bacterial

Washable

Soft

SINGLE CHAIR

915mm



ORDER CODE: HF2

SIZE: D 780 x W 600 x H 915mm

WEIGHT: 13kg

COLOUR OPTIONS: Three

- Flexible back to assist with agitation, reduces restrictive feeling of a standard chair.
- Designed not to tip when swinging.
- Generous sizing to assist with stability and larger clients.
- No legs or hardened back that could be broken or dangerous.
- Can be used stand alone or as modular seating.
- Can be used in conjunction with the foam dining table.
- Soft and safe to use in any environment and easy to move for dining room tables or cleaning purposes.
- Great bedroom or lounging chair
- High frequency welded seams reinforced with top stitching for extra durability



Safe



Waterproof



Fire Retardant



Anti-Bacterial



Washable



Soft

COLOUR RANGE



TEAL



GREEN

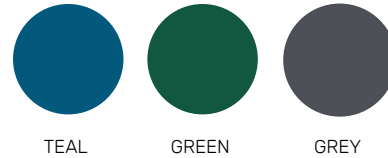


GREY

LOW BACK SINGLE CHAIR



COLOUR RANGE



TEAL

GREEN

GREY

ORDER CODE: HF3

SIZE: D 790 x W 600 x H 735mm

WEIGHT: 12kg

COLOUR OPTIONS: Three

- Flexible back to assist with agitation, reduces restrictive feeling of a standard chair.
- Anti-stacking design, chairs don't naturally stack together
- Designed not to tip when swinging
- Generous sizing to assist with stability and larger clients.
- No legs or hardened back that could be broken or dangerous.
- Can be used stand alone or as modular seating.
- Soft and safe to use in any environment and easy to move for dining room tables or cleaning purposes.
- High frequency welded seams reinforced with top stitching for extra durability.

TWO SEATER COUCH



ORDER CODE: HF10

SIZE: D 780 x W 1200 x H 850mm

WEIGHT: 25kg

COLOUR OPTIONS: Three

- Flexible back to assist with agitation, reduces restrictive feeling of a standard couch.
- One piece cover with minimal seams to assist with cleaning.
- Generous sizing to allow for client and carer.
- One-piece moulded base foam.
- No cushions or legs assisting with cleanability and safety.
- Can be used in modular seating environment.
- High frequency welded seams reinforced with top stitching for extra durability.



Safe

Waterproof

Fire Retardant

Anti-Bacterial

Washable

Soft

COLOUR RANGE



TEAL



GREEN

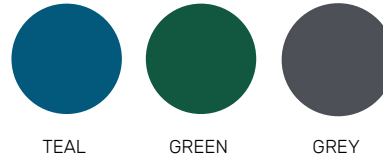


GREY

TWO SEATER COUCH 915mm



COLOUR RANGE



TEAL

GREEN

GREY

ORDER CODE: HF11

SIZE: D 780 x W 1200 x H 915mm

WEIGHT: 26kg

COLOUR OPTIONS: Three

- Flexible back to assist with agitation, reduces restrictive feeling of a standard couch.
- One piece cover with minimal seams to assist with cleaning.
- Generous sizing to allow for client and carer.
- One-piece moulded base foam.
- No cushions or legs assisting with cleanability and safety.
- Can be used in modular seating environment.
- High frequency welded seams reinforced with top stitching for extra durability.

TWO SEATER LOW BACK COUCH



ORDER CODE: HF12

SIZE: D 790 x W 1200 x H 735 mm

WEIGHT: 23kg

COLOUR OPTIONS: Three

- Flexible back to assist with agitation, reduces restrictive feeling of a standard couch.
- One piece cover with minimal seams to assist with cleaning.
- Generous sizing to allow for client and carer.
- One-piece moulded base foam.
- No cushions or legs assisting with cleanability and safety.
- Can be used in modular seating environment.
- Anti-stacking design, chairs don't naturally stack together
- High frequency welded seams reinforced with top stitching for extra durability.



Safe



Waterproof



Fire Retardant



Anti-Bacterial



Washable



Soft

COLOUR RANGE



TEAL



GREEN



GREY

THREE SEATER COUCH



COLOUR RANGE



ORDER CODE: HF20

SIZE: D 780 x W 1800 x H 850mm

WEIGHT: 37kg

COLOUR OPTIONS: Three

- Flexible back to assist with agitation, reduces restrictive feeling of a standard couch.
- One piece cover with minimal seams to assist with cleaning.
- Generous sizing to allow for client and carer.
- One-piece moulded base foam.
- No cushions or legs assisting with cleanability and safety.
- Can be used in modular seating environment.
- High frequency welded seams reinforced with top stitching for extra durability.

THREE SEATER COUCH 915mm



ORDER CODE: HF21

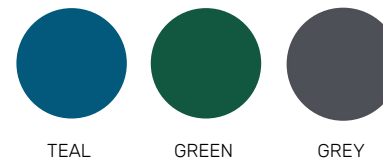
SIZE: D 780 x W 1800 x H 915mm

WEIGHT: 39kg

COLOUR OPTIONS: Three

- Flexible back to assist with agitation, reduces restrictive feeling of a standard couch.
- One piece cover with minimal seams to assist with cleaning.
- Generous sizing to allow for client and carer.
- One-piece moulded base foam.
- No cushions or legs assisting with cleanability and safety.
- Can be used in modular seating environment.
- High frequency welded seams reinforced with top stitching for extra durability.

COLOUR RANGE



TEAL

GREEN

GREY



Safe

Waterproof

Fire Retardant

Anti-Bacterial

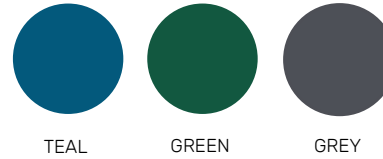
Washable

Soft

THREE SEATER LOW BACK COUCH



COLOUR RANGE



ORDER CODE: HF22

SIZE: D 790 x W 1800 x H 735mm

WEIGHT: 35kg

COLOUR OPTIONS: Three

- Flexible back to assist with agitation, reduces restrictive feeling of a standard couch.
- One piece cover with minimal seams to assist with cleaning.
- Generous sizing to allow for client and carer.
- One-piece moulded base foam.
- No cushions or legs assisting with cleanability and safety.
- Can be used in modular seating environment.
- Anti-stacking design, chairs don't naturally stack together.
- High frequency welded seams reinforced with top stitching for extra durability.





Safe



Waterproof



Fire Retardant



Anti-Bacterial



Washable

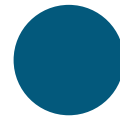


Soft

SENSORY ROCKING CHAIR



COLOUR RANGE



TEAL



GREEN



GREY

ORDER CODE: HF60

SIZE: D 1385 x W 850 x H 655mm

WEIGHT: 39kg

COLOUR OPTIONS: Three

- The all-time favourite for any lounging / sensory area. Providing sensory modulation without any power and minimal maintenance or dangerous features.
- High Frequency welded seams reinforced with top stitching for extra durability
- Perfect for sensory modulation and de-escalation.
- Ergonomically designed to gently rock without tipping while being easy to exit.
- Provides therapy with frequent use.



BEAN BAG



ORDER CODE: HF70

SIZE: D 1000 x W 1000 x H 350mm

WEIGHT: 9kg

COLOUR OPTIONS: Three

- Dual layer cover construction with double reinforced seams.
- High frequency welded seams reinforced with top stitching. Waterproof PVC eliminating the risk of fluid ingress.
- Dual purpose – can be used as a disc or more like a bean chair on its side.
- Commercial grade micro-beads (rather than standard beads) which easily align to the body contour and don't compress / go flat over time.
- Bean bag / bean chair range can be purchased with polystyrene beads OR 100% recycled foam chip – a more environmentally friendly + safer fire retardant (FR) option.



Safe

Waterproof

Fire Retardant

Anti-Bacterial

Washable

Soft

COLOUR RANGE



TEAL

GREEN

GREY

XL BEAN BAG



ORDER CODE: HF71

SIZE: D 1350 x W 1350 x H 350mm

WEIGHT: 20kg

COLOUR OPTIONS: Three

- Massive diameter bean bag for multiple users and in lounging / relaxing areas.
- High Frequency welded seams reinforced with top stitching for extra durability
- Fully welded seams and waterproof PVC reducing the risk of fluid ingress.
- Commercial grade micro-beads (rather than standard beads) which easily align to the body contour and don't compress / go flat over time.
- Bean bag / bean chair range can be purchased with polystyrene beads or 100% recycled foam chip a more environmentally friendly + safe fire retardant (FR) option.

COLOUR RANGE



TEAL

GREEN

GREY



Safe



Waterproof



Fire Retardant



Anti-Bacterial



Washable



Soft

BEAN CHAIR



COLOUR RANGE



TEAL



GREEN



GREY

ORDER CODE: HF72

SIZE: D 790 x W 685 x H 890mm

WEIGHT: 9kg

COLOUR OPTIONS: Three

- Comfortable upright relaxing seating position.
- High frequency welded seams reinforced with top stitching for extra durability, eliminating the risk of fluid ingress.
- Commercial grade micro-beads (rather than standard beads) which easily align to the body contour and don't compress / go flat over time.
- Bean bag / bean chair range can be purchased with polystyrene beads OR 100% recycled foam chip - a more environmentally friendly + safer fire retardant (FR) option.
- Fully welded seams and waterproof PVC reducing the risk of fluid ingress.



Safe



Waterproof



Fire Retardant



Anti-Bacterial



Washable



Soft



ROUND DINING TABLE



ORDER CODE: HF80

SIZE: D 1200 x W 1200 x H 780mm

WEIGHT: 11kg

COLOUR OTPIONS: Three

- 11kgs, the safest table on today's market.
- Multi density waterproof foam assisting with stability.
- Interlocked foam structure for added strength and longevity if tampered with and thrown.
- High Frequency welded seams reinforced with top stitching for extra durability.
- Standalone and no need to bolt down - so can't be used as an anchor point.
- Best used in conjunction with shaped ottomans or single chairs.
- Extra durable reinforced seam.



Safe

Waterproof

Fire Retardant

Anti-Bacterial

Washable

Soft

COLOUR RANGE



TEAL

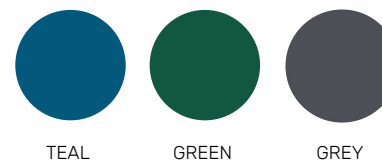
GREEN

GREY

SQUARE DINING TABLE



COLOUR RANGE



ORDER CODE: HF81

SIZE: D 1100 x W 1100 x H 780mm

WEIGHT: 13kg

COLOUR OPTIONS: Three

- 13kgs, the safest table on today's market.
- Generous table top size.
- Multi density water proof foam assisting with stability.
- Interlocked foam structure for added strength and longevity, if tampered with and thrown.
- Standalone with no need to bolt down, so it can't be used as an anchor point.
- Best used in conjunction with shaped ottomans or single chairs.
- Extra durable reinforced seam.



Safe



Waterproof



Fire Retardant



Anti-Bacterial

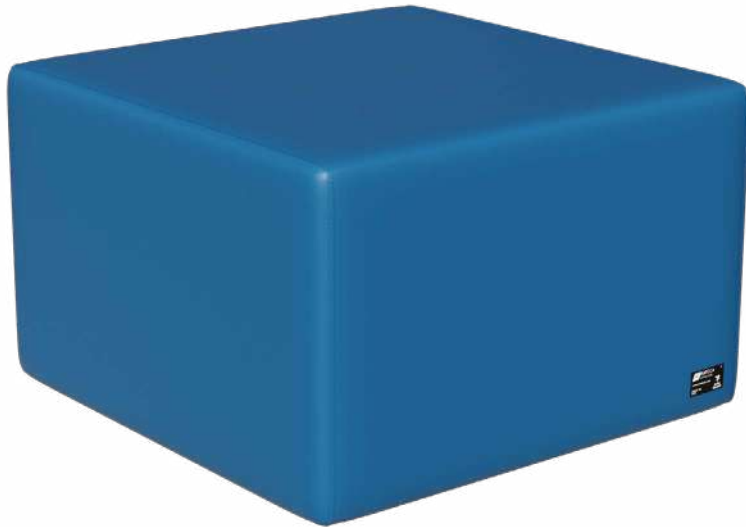


Washable

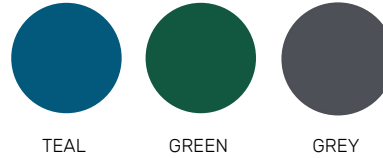


Soft

COFFEE TABLE



COLOUR RANGE



ORDER CODE: HF90

SIZE: D 770 x W 770 x H 480mm

WEIGHT: 11kg

COLOUR OPTIONS: Three

- Single density foam for stability.
- Great for coffee/magazine table.
- High Frequency welded seams reinforced with top stitching for extra durability.
- Same height as single chair to assist with modular seating arrangement.
- Works best in the corner of the room or in conjunction with the Single Chair.

RECTANGLE COFFEE TABLE

COLOUR RANGE



TEAL



GREEN



GREY

ORDER CODE: HF91

SIZE: D 900 x W 600 x H 480mm

WEIGHT: 13kg

COLOUR OPTIONS: Three

- Single density foam for stability.
- Great for coffee/magazine table.
- High Frequency welded seams reinforced with top stitching for extra durability.
- Same height as single chair to assist with modular seating arrangement.



Safe



Waterproof



Fire Retardant



Anti-Bacterial



Washable

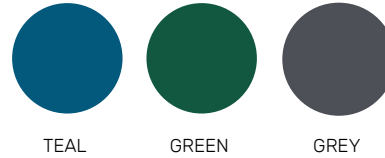


Soft

ROUND COFFEE TABLE



COLOUR RANGE



TEAL

GREEN

GREY

ORDER CODE: HF92

SIZE: D 1000 x W 1000 x H 480mm

WEIGHT: 18kg

COLOUR OPTIONS: Three

- Single density foam for stability.
- Great for coffee/magazine table.
- High Frequency welded seams reinforced with top stitching for extra durability.
- Same height as single chair to assist with modular seating arrangement.

QUARTER TABLE



COLOUR RANGE



TEAL



GREEN



GREY

ORDER CODE: HF93

SIZE: D 770 x W 770 x H 480mm

WEIGHT: 10kg

COLOUR OPTIONS: Three

- Single density foam to make a sturdy table.
- Soft table, easy to move around for new configurations or cleaning purposes.
- Can be used standalone or as modular including a full circle coffee table.
- Best used in conjunction with single chairs and corner table.
- High frequency welded seams reinforced with top stitching for extra durability.



BEDSIDE TABLE



COLOUR RANGE



TEAL

GREEN

GREY

ORDER CODE: HF95

SIZES: 400 x W 450 x H 600mm

WEIGHT: 5kg

COLOUR OPTION: Three

- Collapsible design to prevent climbing while being sturdy enough to hold personal objects.
- One piece cover to prevent hidden contraband.
- Recessed shelf for ultimate storage.
- Made from foam so if thrown, removes the fear of traditional wooden bedsides.
- No hard corners or hard components.
- Safest bedside table by far.



GAMES TABLE

SNAKES & LADDERS



COLOUR RANGE



GREY

ORDER CODE: HF100

SIZE: D 1100 x W 1100 x H 780mm

WEIGHT: 13kg

COLOUR OPTIONS: One

- 13kgs, the safest table on today's market.
- Single density water proof foam assisting with stability.
- Interlocked foam structure for added strength and longevity, if tampered with and thrown.
- Standalone with no need to bolt down, so it can't be used as an anchor point.
- Best used in conjunction with shaped ottomans or single chairs.
- High resolution digital printed board game.
- Extra durable reinforced seams.

SQUARE GAMES BOARD - CHESS



COLOUR RANGE



GREY

ORDER CODE: HF101

SIZE: D 1100 x W 1100 x H 780mm

WEIGHT: 13kg

COLOUR OPTIONS: One

- 13kgs, the safest table on today's market.
- Single density water proof foam assisting with stability.
- Interlocked foam structure for added strength and longevity, if tampered with and thrown.
- Standalone with no need to bolt down, so it can't be used as an anchor point.
- Best used in conjunction with shaped ottomans or single chairs.
- High resolution digital printed board game.
- Extra durable reinforced seams.



Safe



Waterproof



Fire Retardant



Anti-Bacterial



Washable



Soft



GAMES OTTOMAN

SNAKES & LADDERS



ORDER CODE: HF102

SIZE: D 770 x W 770 x H 480mm

WEIGHT: 11kg

COLOUR OPTIONS: One

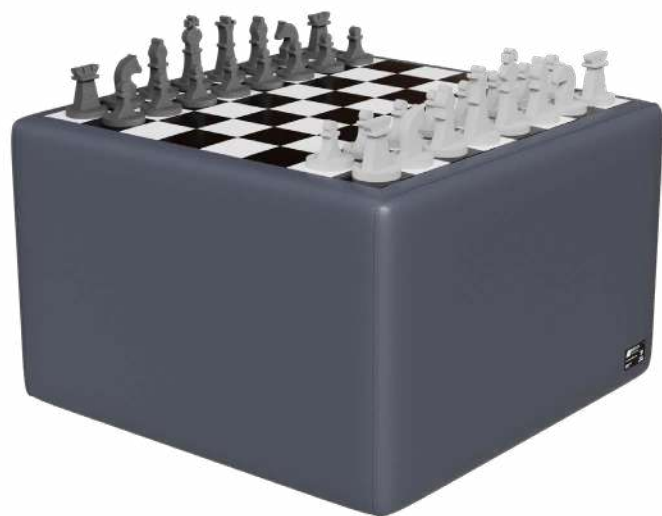
- Very soft making it easy to move around and safe.
- Digital printed with snakes & ladders or chess / checkers board game.
- Works best in conjunction with single chairs or Abecca ottomans.
- Single density foam for ultimate stability.
- Can be supplied with large foam pieces.
- High frequency welded seams reinforced with top stitching for extra durability.

COLOUR RANGE



GREY

GAMES OTTOMAN CHESS AND CHECKERS



COLOUR RANGE



GREY

ORDER CODE: HF103

SIZE: D 770 x W 770 x H 480mm

WEIGHT: 11kg

COLOUR OPTIONS: One

- Soft making it easy to move around and safe.
- Digital printed with snakes & ladders or chess / checkers board game.
- Works best in conjunction with single chairs or Abecca ottomans.
- Single density foam for ultimate stability.
- Can be supplied with large foam pieces.
- High frequency welded seams reinforced with top stitching for extra durability.



SNAKES & LADDERS GAMES PIECES



ORDER CODE: HF10

SIZE: 70 x 20mm

COLOUR: 6 individual pieces

- Durable waterproof foam.
- Easy to keep clean.
- Soft and safe (can be left out in high dependency units).
- Ideal for occupational therapy and sensory modulation/
- Includes 6 coloured counters and 1 dice.



Safe



Waterproof



Washable



Soft



CHECKERS GAMES PIECES

ORDER CODE: HF111

SIZE: 70 x 20mm

COLOUR: 12 black pieces, 12 white pieces

- Durable waterproof foam.
- Easy to keep clean.
- Lightweight and safe (can be left out in high dependency units).
- Ideal for occupational therapy and sensory modulation.



CHESS GAMES PIECES

ORDER CODE: HF112

SIZE: 120 x 70mm

COLOUR: 16 black pieces, 16 white pieces

- Durable waterproof foam.
- Easy to keep clean.
- Lightweight and safe (can be left out in high dependency units).
- Ideal for occupational therapy and sensory modulation.

XL FOAM JENGA



ORDER CODE: HF113

SIZE: L 450 x W 150 x H 80mm (each block)

- 33 blocks per set

COLOUR: Blue

- Made from light, durable foam.
- Completely safe, waterproof and easy to clean.
- Ideal for occupational therapy and sensory modulation.
- Requires more physical movement than the smaller version.
- Set stands almost 900mm metre high pre-game.



Safe



Waterproof



Fire Retardant



Anti-Bacterial



Washable



Soft



SQUARE OTTOMAN



COLOUR RANGE



TEAL



GREEN



GREY

ORDER CODE: HF120

SIZE: D 500 x W 500 x H 480mm

WEIGHT: 5kg

COLOUR OPTIONS: Three

ORDER CODE: HF129

SIZE: D 550 x W 550 x H 480mm

ORDER CODE: HF130

SIZE: D 600x W 600 x H 480mm

- Single density, generous size foam structure for extra stability.
- No legs or slides assisting with longevity and safety.
- Soft and easy to move for flexibility and cleaning.
- Multi use ottoman perfect height to tuck away under tables or benches.
- High frequency welded seams reinforced with top stitching for extra durability.





COLOUR RANGE



TEAL

GREEN

GREY

ORDER CODE: HF121

SIZE: D 540 x W 540 x H 480mm

WEIGHT: 6kg

COLOUR OPTIONS: Three

ORDER CODE: HF131

SIZE: D 600 x W 600 x H 480mm

- Single density, generous size foam structure for extra stability.
- No legs or slides assisting with longevity and safety.
- Soft and easy to move for flexibility and cleaning.
- Multi use cylindrical ottoman for seating or footrest. Works well as standalone or a modular set.
- Perfect for bedrooms or lounge / dining areas.
- High frequency welded seams reinforced with top stitching for extra durability.

ROUND OTTOMAN



Safe



Waterproof



Fire Retardant



Anti-Bacterial



Washable



Soft

SHAPED OTTOMAN



COLOUR RANGE



TEAL

GREEN

GREY

ORDER CODE: HF122

SIZE: D 895 x W 510 x H 480mm

WEIGHT: 8kg

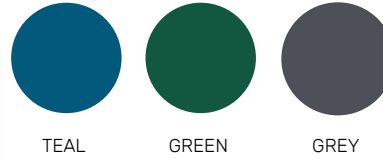
COLOUR OPTIONS: Three

- Single density foam structure with extra wide back for extra stability.
- No legs or slides assisting with longevity and safety.
- Soft and easy to move for flexibility and cleaning.
- Works well with Abecca's foam dining tables.
- Can be standalone or modular – works well as a set of six.
- Perfectly shaped to integrate creating many different collaboration layouts.
- High frequency welded seams reinforced with top stitching for extra durability.



1.5M OTTOMAN

COLOUR RANGE



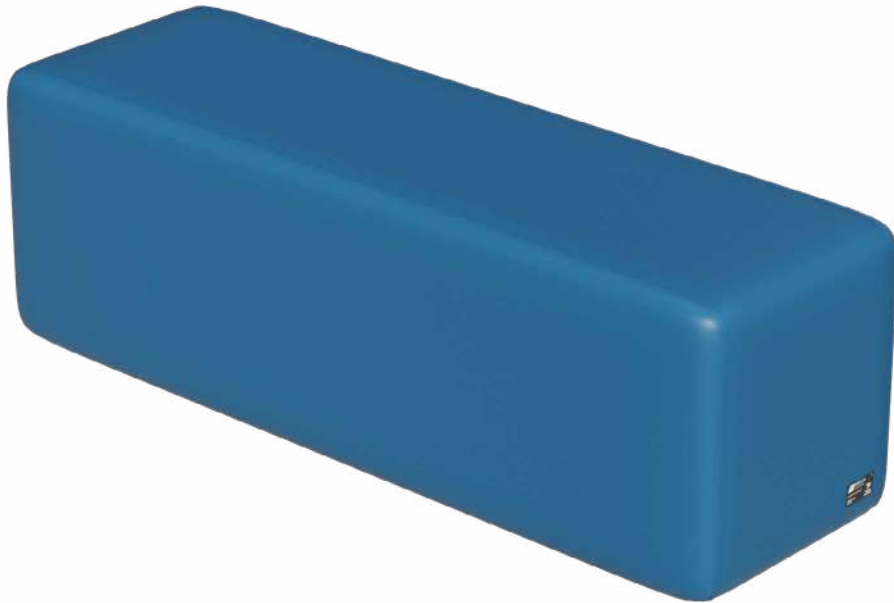
ORDER CODE: HF123

SIZE: D 500 x W 1500 x H 480mm

WEIGHT: 17kg

COLOUR OPTIONS: Three

- Single density, generous size foam structure for extra stability.
- No legs or slides assisting with longevity and safety.
- Soft and easy to move for flexibility and cleaning.
- Multi use ottoman perfect height to tuck away under tables or benches.
- High frequency welded seams reinforced with top stitching for extra durability.



COLOUR RANGE



TEAL

GREEN

GREY

ORDER CODE: HF124

SIZE: D 500 x W 2000 x H 480mm

WEIGHT: 23kg

COLOUR OPTIONS: Three

- Simple bench seat with nowhere to hide contraband.
- Single density foam construction for extra stability.
- Generous sizing.
- Excellent option for waiting rooms and lounge areas.
- High frequency welded seams reinforced with top stitching for extra durability.

2M OTTOMAN



Safe



Waterproof



Fire Retardant



Anti-Bacterial



Washable

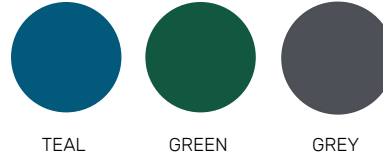


Soft

HEXAGON OTTOMAN



COLOUR RANGE



TEAL

GREEN

GREY

ORDER CODE: HF125

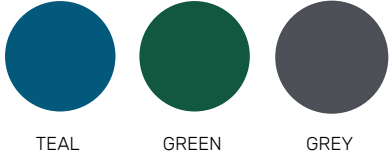
SIZE: D 565 x W 490 x H 480mm

WEIGHT: 5kg

COLOUR OPTIONS: Three

- Single density, generous foam structure for extra stability.
- No legs or slides assisting with longevity and safety.
- Soft and easy to move for flexibility and cleaning.
- Can be standalone or modular – works well as a set of six.
- Perfectly shaped to integrate creating many different collaboration layouts.
- High frequency welded seams reinforced with top stitching for extra durability.

COLOUR RANGE



ORDER CODE: HF126

SIZE: D 545 x W 470 x H 480mm

WEIGHT: 4kg

COLOUR OPTION: Three

- Single density, generous foam structure for extra stability.
- No legs or slides assisting with longevity and safety.
- Soft and easy to move for flexibility and cleaning.
- Can be standalone or modular – works well as a set of six.
- Perfectly shaped to integrate creating many different collaboration layouts.
- High frequency welded seams reinforced with top stitching for extra durability.



Safe

Waterproof

Fire Retardant

Anti-Bacterial

Washable

Soft

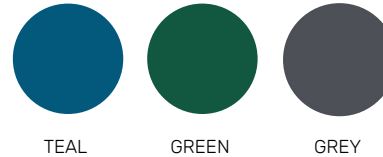
CRESENT OTTOMAN



DIAMOND OTTOMAN



COLOUR RANGE



TEAL

GREEN

GREY

ORDER CODE: HF127

SIZE: D 890 x W 550 x H 480mm

WEIGHT: 6kg

COLOUR OPTIONS: Three

- Single density, generous foam structure for extra stability.
- No legs or slides assisting with longevity and safety.
- Soft and easy to move for flexibility and cleaning.
- Can be standalone or modular
- Perfectly shaped to integrate creating many different collaboration layouts.
- High frequency welded seams reinforced with top stitching for extra durability.

COLOUR RANGE



TEAL



GREEN



GREY

ORDER CODE: HF128

SIZE: D 570 x W 570 x H 480mm

WEIGHT: 5kg

COLOUR OPTIONS: Three

- Single density, generous foam structure for extra stability.
- No legs or slides assisting with longevity and safety.
- Soft and easy to move for flexibility and cleaning.
- Can be standalone or modular
- Perfectly shaped to integrate creating many different collaboration layouts.
- High frequency welded seams reinforced with top stitching for extra durability.

TRIANGLE OTTOMAN

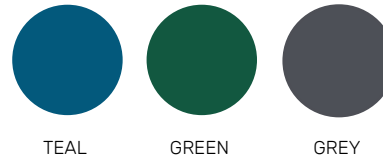




FOAM DOOR



COLOUR RANGE



TEAL

GREEN

GREY



ORDER CODE: HD1 up to 950mm WIDE

ORDER CODE: HD2 up to 950mm WIDE + PRINT

ORDER CODE: HD10 up to 1200mm WIDE

ORDER CODE: HD11 up to 1200mm WIDE + PRINT

COLOUR OPTIONS: Three

- Door height 1200mm
- Anti-ligature, closed cell foam with medical grade PVC cover.
- Fire retardant PVC has a tear rating of 600N and won't produce running rips if punctured.
- Simple magnet hinge and latch closure. Magnets are encased in a pocket for extra security.
- 9kg break weight/release weight.
- Can be digitally printed with any design/scene on one or two sides.
- Retro fitting available and can be made to any size to suit environment.
- Extra durable reinforced seams
- Magnet strips can be supplied for retro fitting to non-magnetic surfaces.



Safe



Waterproof



Fire Retardant



Anti-Bacterial



Washable



Soft

FOAM DOOR PRINT OPTIONS



TROPICAL PLANT



BOAT ON LAKE



TOI TOI



FOREST SUN



KAURI MATTRESS 150



ORDER CODE: MHK01

SIZE: L 1980 x W 860 x H 150mm

WEIGHT: 12kg

- European commercial medical grade / PVC fabric, with 600N tear resistance.
- Fire Retardant foam and fabric BS 7177: 2008 + A1: 2011 (Crib 7).
- Fully sealed tamper, tear and slash resistant cover reducing the risk of self-harm.
- Waterproof with no openings to prevent the hiding of contraband.
- Streamline cover design with very few seams.
- Anti-ligature mattress for high-risk areas.
- High Frequency welded seams reinforced with stitching for extra durability.



ORDER CODE: MHK01W

SIZE: L 2020 x W 1060 x H 150mm

WEIGHT: 15kg



Safe



Waterproof



Fire Retardant



Anti-Bacterial



Washable



Soft

KAURI MATTRESS 150 WITH PILLOW



ORDER CODE: MHK01P
SIZE: L 1980 x W 860 x H 150mm
WEIGHT: 13kg



ORDER CODE: MHK01WP
SIZE: L 2020 x W 1060 x H 150mm
WEIGHT: 16kg

- In built pillow with minimal seams and no seam across the top of the mattress, improving the durability of cover and reducing the risk of hidden contraband.
- Moulded foam pillow which will hold its shape, unlike dacron / stuffing.



Safe

Waterproof

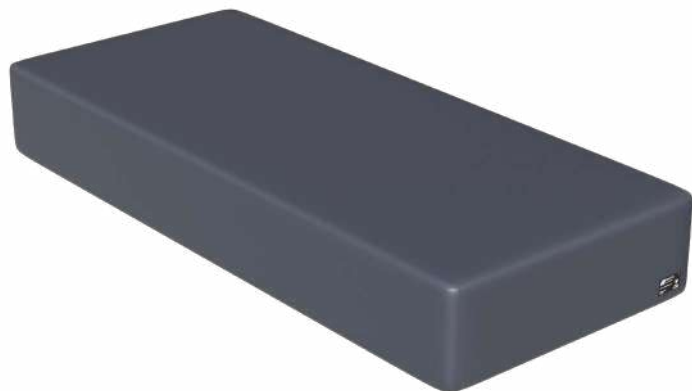
Fire Retardant

Anti-Bacterial

Washable

Soft

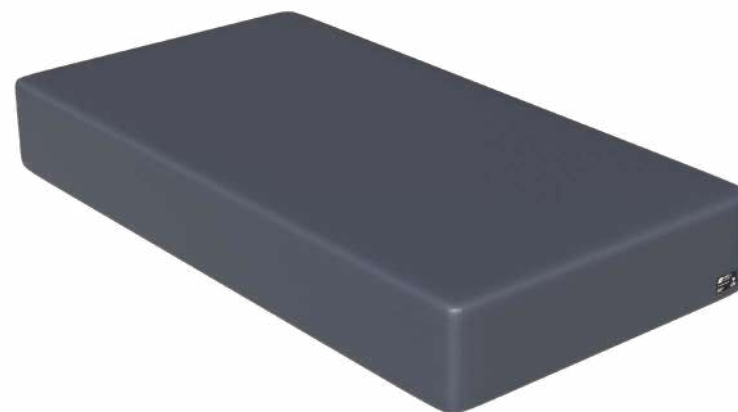
KAURI MATTRESS 300



ORDER CODE: MHK02

SIZE: L 1980 x W 860 x H 300mm

WEIGHT: 24kg



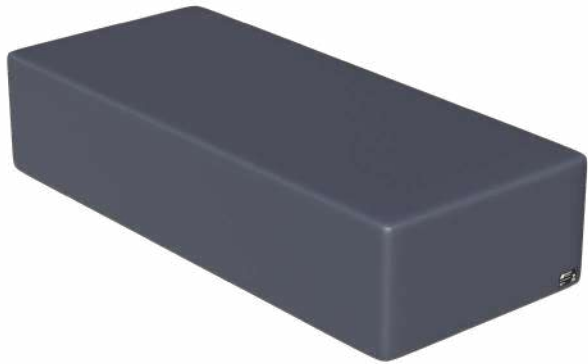
ORDER CODE: MHK02W

SIZE: L 2020 x W 1060 x H 300mm

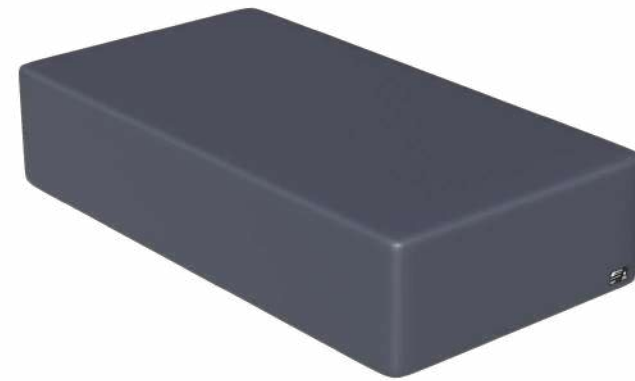
WEIGHT: 30kg

- Integrated bed and mattress designed to be used directly on the floor, the ultimate anti-ligature mattress for high risk areas.
- Can be used with a Kauri 150 mattress on top to assist with bedding.
- European commercial medical grade PVC fabric, with 600N tear resistance.
- Fire Retardant foam and fabric – BS 7177: 2008 + A1: 2011 (Crib 7).
- High Frequency welded seams reinforced with stitching for extra durability.

KAURI MATTRESS 450



ORDER CODE: MHK03
SIZE: L 1980 x W 860 x H 450mm
WEIGHT: 35kg



ORDER CODE: MHK03W
SIZE: L 2020 x W 1060 x H 450mm
WEIGHT: 42kg

- Fully sealed tamper, tear and slash resistant cover reducing the risk of self-harm.
- Waterproof with no openings to prevent the hiding of contraband.
- Smooth fabric for ease of cleaning and comfort.
- Purpose built one piece base and mattress design, the ultimate anti-ligature mattress for high risk areas.



Safe



Waterproof



Fire Retardant



Anti-Bacterial

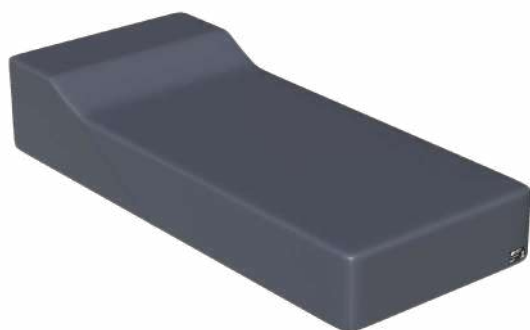


Washable



Soft

KAURI MATTRESS 300 WITH PILLOW



ORDER CODE: MHK02P
SIZE: L 1980 x W 860 x H 300mm
WEIGHT: 25kg



ORDER CODE: MHK02WP
SIZE: L 2020 x W 1060 x H 300mm
WEIGHT: 31kg

- Integrated bed and mattress designed to be used directly on the floor, the ultimate anti-ligature mattress for high risk areas.
- Can be used with a Kauri 150 mattress on top to assist with bedding.
- European commercial medical grade PVC fabric, with 600N tear resistance.
- Fire Retardant foam and fabric – BS 7177: 2008 + A1: 2011 (Crib 7).
- Fully sealed tamper, tear and slash resistant cover reducing the risk of self-help.
- Waterproof with no openings to prevent the hiding of contraband.
- High Frequency welded seams reinforced with stitching for extra durability.

KAURI MATTRESS 450 WITH PILLOW



ORDER CODE: MHK03P

SIZE: L 1980 x W 860 x H 450mm

WEIGHT: 36kg



ORDER CODE: MHK03WP

SIZE: L 2020 x W 1060 x H 450mm

WEIGHT: 43kg

- Smooth fabric for ease of cleaning and comfort.
- Purpose built one piece base and mattress design, the ultimate anti-ligature mattress for high risk areas.
- No seams on top of mattress across pillow, adding to the durability of the cover.
- In built pillow with minimal seams and no seam across the top of the mattress, improving the durability of cover and reducing the risk of hidden contraband
- Moulded foam pillow, which will hold its shape, unlike dacron/stuffing.



Safe



Waterproof



Fire Retardant



Anti-Bacterial

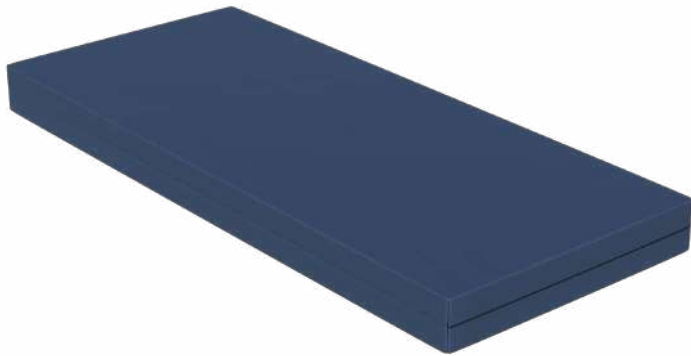


Washable



Soft

TOTARA MATTRESS



ORDER CODE: MHT01
SIZE: L 1980 x W 860 x H 150mm
WEIGHT: 10kg



ORDER CODE: MHT01W
SIZE: L 2020 x W 1060 x H 150mm
WEIGHT: 13kg

- Breathable Polyurethane, fire-retardant cover with welded seams complying with BS 7177: 2008 + A1: 2011 (Crib 7),
- Hospital grade fabric and foam.
- Water-resistant zip with slider removed and reinforced closures to prevent hidden contraband.
- Tamper resistance 4-way-turn mattress to maximise its life span.
- Commercial grade fire retardant foam.
- Soft and comfortable with oetex approved fabric for safe contact with skin, assisting with pressure relief.
- Streamline design assisting with cleanability and infection control.
- High frequency welded seam.

MATTRESS SAMPLES



TOTARA MATTRESS



KAURI MATTRESS

TOTARA PILLOW



COLOUR RANGE



ORDER CODE: MHP01

SIZE: L 750 x W 500mm

COLOUR OPTIONS: Navy

WEIGHT: 4kg

- High frequency welded seams reinforced with top stitching for extra durability.
- Medical grade okeo-tex approved fabric.
- Comfortable, malleable filling of foam chips 48 litres.
- Antibacterial, anti-fungal and easy to clean.
- BS7177 FR Rating.



Safe



Waterproof



Fire Retardant



Anti-Bacterial



Washable



Soft

KAURI PILLOW



COLOUR RANGE



GREY

ORDER CODE: MHP02

SIZE: L 750 x W 500mm

COLOUR OPTIONS: One

WEIGHT: 4kg

- High frequency welded seams reinforced with top stitching for extra durability.
- Medical grade okeo-tex approved fabric.
- Comfortable, malleable filling of foam chips 48 litres.
- Antibacterial, anti-fungal and easy to clean.
- Purpose built for to high risk environments.
- BS7177 FR Rating.



Safe



Waterproof



Fire Retardant



Anti-Bacterial



Washable



Soft





KAURI AND TOTARA CLEANING INSTRUCTIONS

1. Most stains can be cleaned using warm soapy water, followed by clean water rinsing.
2. For a sanitising process wipe mattress with warm water and mild detergent /soap on a sponge or softcloth.
3. To sterilise mattress, dilute 1 part Sodium Hypochlorite with 100 parts water, apply to mattress with sponge or soft cloth. Wipe off then rinse completely with clear water and dry thoroughly.

**NB: Failure to follow these instructions may void the warranty.
To get your cleaning methods and product approved please contact Abecca.**



Safe



Waterproof



Fire Retardant



Anti-Bacterial



Washable



Soft



CUSTOMER SATISFACTION

"WE ARE VERY PLEASED WITH OUR NEW FURNITURE THAT HAS BEEN DELIVERED TO UNIT 2, IT LOOKS FANTASTIC AND MAKES OUR UNIT FEEL SO MUCH BRIGHTER AND HOMELY!"

THERESA

ABECCA FOUNDERS

Hamish Beatson
Managing Director

Joseph Beatson
General Manager



Joseph Beatson General Manager
+61 481 614 804 | joseph@abeccadesign.com

NEW ZEALAND
+64 6 358 9642
abeccadesign.com

AUSTRALIA
+61 2 8089 3950

HEAD OFFICE 82 Sedcole Street, Pahiatua 4910 New Zealand



Hamish Beatson Managing Director
+61 47251 7451 | hamish@abeccadesign.com

NEW ZEALAND
+64 6 358 9642
abeccadesign.com

AUSTRALIA
+61 2 8089 3950

HEAD OFFICE 82 Sedcole Street, Pahiatua 4910 New Zealand

ABECCA

BY DESIGN

HAWK RANGE CATALOGUE

NEW ZEALAND

+64 6 358 9642

AUSTRALIA

+61 2 8089 3950

abeccadesign.com

